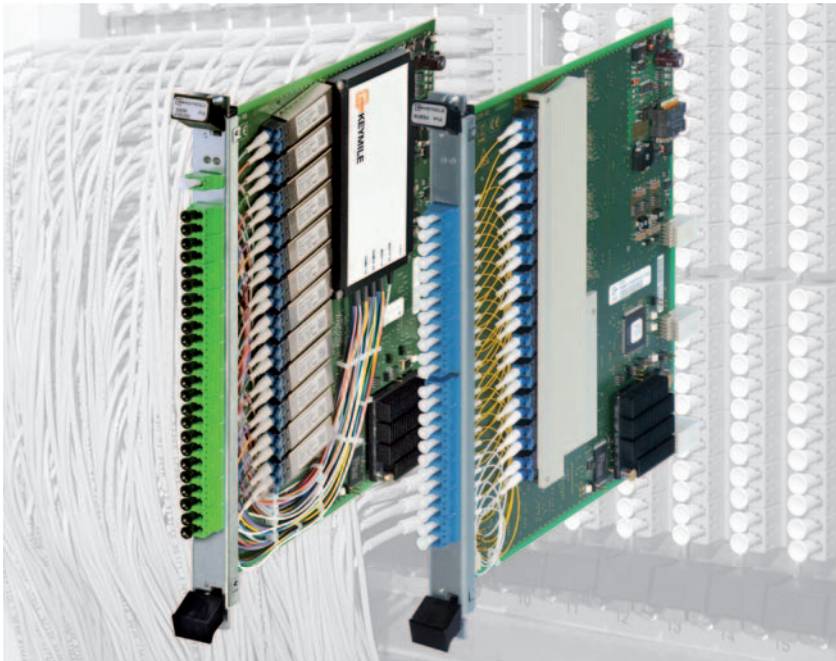


MileGate SUEN3/SUEN4

Line cards for Fibre-to-the-Home (FTTH) connections for residential and business customers via optical Ethernet



Front view MileGate SUEN3 (left) and SUEN4

- 24 optical gigabit Ethernet interfaces for standard CPEs
- Up to 480 connections per subrack
- SFF modules for maximum port density
- For MileGate 2500 and MileGate 2300
- SUEN3 with integrated wavelength multiplexer for simultaneous transmission of a cable TV signal
- Designed for indoor and outdoor usage
- All functions from one network management system

The SUEN3/SUEN4 line cards provide 24 optical Ethernet interfaces. Via the 1000Base-BX10 connections, you can connect optical CPEs (Customer Premises Equipment) and guarantee residential and business customers powerful connections to the Internet. On an additional wavelength on the same optical fibre, you can supply customers with a complete cable television offering.

With high port density and low power consumption, SUEN3 and SUEN 4 are ideal for Fibre-to-the-Home networks with many subscribers.

■ Optic Ethernet services in MileGate

SUEN3/4 use active Ethernet technology for the subscriber connection. Installing Ethernet point-to-point leads to a sustainable network infrastructure.

Up to 480 subscribers can be served with a fully-equipped MileGate 2500 subrack. Thanks to the compact design and the low power consumption, MileGate with SUEN3/SUEN4 can be placed in central office locations, small telecommunications rooms, or street cabinets.

■ CATV overlay (only SUEN3)

Using an extra wavelength, the integrated wavelength multiplexer distributes a cable television signal to each subscriber port – with a minimum of external, optical cabling.

At the customer site, the cable TV signal is in a standard CPE converted back into separate, electric signal again. This signal can be fed directly into the existing coaxial wiring in the house or apartment, supplying the entire household with analogue and digital cable television.

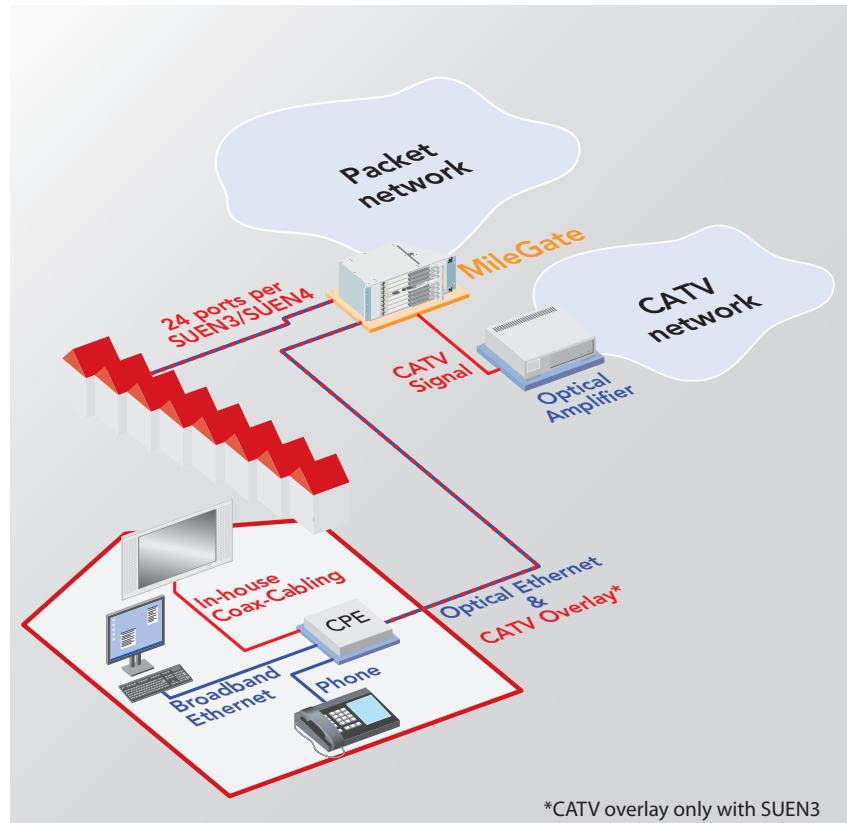
New, IP-based services like IPTV and Video-on-Demand are of course supported on the SUEN3/SUEN4.

■ Fail-safe concept

MileGate offers you a fail-safe concept in carrier class quality. All the units have local power supplies. The core unit can also be redundant as a safeguard against failure.

■ High-speed broadband

SUEN3/SUEN4 provide bandwidths of up to 1000Mbps for the subscribers. As a result, today's access network is well equipped to deal with tomorrow's challenges.



MileGate and SUEN3/SUEN4 in FTTH Applications

Technical Data

Data Transmission	
Ethernet ports	24 x GbE 1000Base-BX10, configurable for 100Mbps or 1000Mbps
Connector type	LC
Optical transmission	Bidirectional, single mode
Ethernet functionality	
Supported protocols	PPPoE PPPoE Intermediate Agent acc. to DSL Forum TR-101 and IETF RFC 2516 IPoE DHCP Option 82 according to IETF RFC 2131, RFC 951, RFC 3046
IGMPv3 snooping	According to IETF RFC 3376 with IPoE
VLAN	VLAN according to 802.1Q Modes 1:1 or n:1
Management	
MCST	For local management
UNEM	For central management
Power Supply	
Input voltage nominal (min/max)	-48/-60VDC (-40.5VDC ... -72VDC)
Operation Environment	
Temperature range and humidity	According to MileGate environmental specifications



Looking for more information?
 Find your local contact on www.keymile.com
 or contact us: info@keymile.com ...